

Product Specification

1.5"

TFT-LCD Driver Board

FOR APPROVAL

MODEL NO.:

PCB NO.: AT720C-SH015V1

Customer's Approval

| | |
|-----------|--|
| Customer: | |
| Date: | |
| By: | |

| | | | |
|--------------|-------------|----------------|---------|
| Confirmed By | Prepared By | Manufacture NO | |
| | | Version | 1.0 |
| | | Total Pages | 5 |
| | | Date | 2009.08 |

Features

- Support TFT-LCD panels
 - i. 1.5"
- Support NTSC/PAL video input auto changeable
- Support 1 video input

Mechanical Specification

Board Dimension

| Dimension | Specification | Unit |
|-----------|---------------|------|
| Length | 40.0 | mm |
| Width | 33.0 | mm |
| Thickness | 7.0 | mm |

Video Input Signal

Video-Composite signal 1.0 Vp-p 75Ω

Operating Temperature

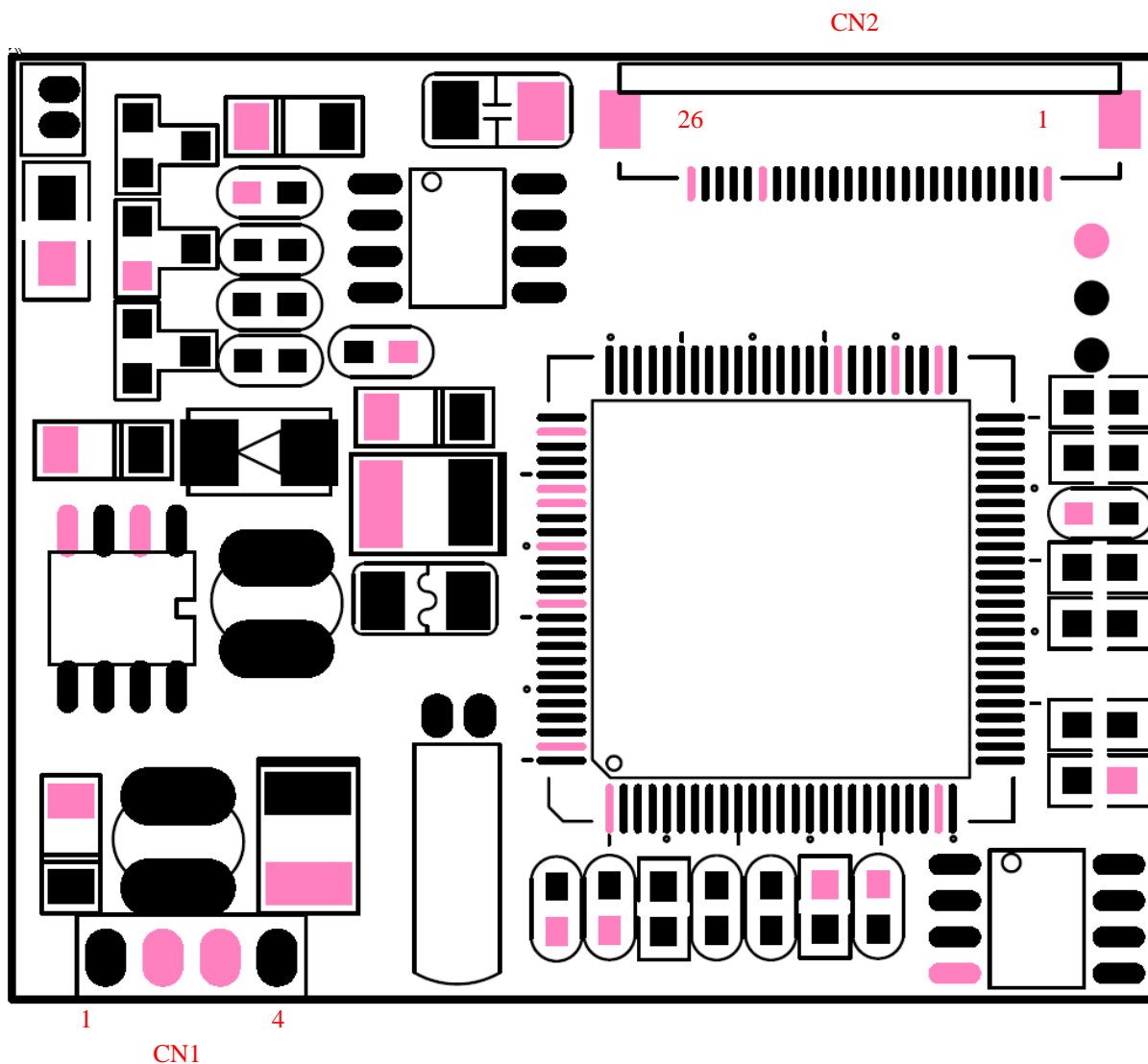
0°C ~ 60°C

Electrical Characteristics

| Item | Symbol | Condition | Min | Typ | Max | Unit | Remark |
|----------------|--------|-----------|-----|------|-----|------|--------|
| Supply Voltage | Vcc | GND = 0 | 5 | 5 | 5 | V | |
| Supply Current | Icc | Vcc = 5 | | <200 | | mA | |

Driver Board Specification

Terminal Drawing



| CN1 | |
|-----|-----------------------|
| PIN | Connection |
| 1 | VCC +5V |
| 2 | GND |
| 3 | GND |
| 4 | AV1 (Video-Composite) |

| | |
|------|-----------------------------|
| CN2 | |
| PIN | Connection |
| 1~26 | TFT LCD connection for 1.5" |

Outline Drawing

